

**Ashland-Greenwood Public Schools
General Fund Claims
November 15, 2010**

Check #	Vendor	Amount	Description
028127	Curb Appeal Siding-Ian Maggiore	\$ 5,627.50	Maintenance: DO Roof
028128	Mark Powell	\$ 254.37	Security Officer
028129	AG Payroll Account	\$ 253,142.05	Net Payroll
028130	AGEA	\$ 2,129.26	Employee Dues
028131	BCBS of NE	\$ 74,666.61	Payroll Employee Health Ins
028132	Centennial Bank	\$ 9,016.44	Payroll Section 125 Deduct
028133	Guardian	\$ 885.97	Payroll Employee Life Prem
028134	Guardian	\$ 631.64	Employee Vision Plan
028135	National Insurance Service	\$ 1,038.64	Payroll Annuity Deduction
028136	MidAmerica 403b	\$ 1,840.00	Payroll LTD Insurance Prem
028137	AG Payroll Account	\$ 11,799.63	Payroll State Tax Wthhldg
028138	AG Payroll Account	\$ 327.00	Employee Child Support Paymnt
028139	AG Payroll Account	\$ 81,927.93	Payroll Federal Tax Wthhldg
028140	Retirement	\$ 59,721.89	Payroll Retirement Wthhldg
028141	AmSan LLC	\$ 2,047.42	Custodial: Supplies
028142	Ashland Auto Parts	\$ 214.73	Transportation:Bus Filters Supplies
028143	Ashland Pharmacy	\$ 4.49	Nurse: Supplies
028144	City Of Ashland	\$ 2,507.00	All Areas: Water and Sewer
028145	Collison Center	\$ 416.00	Windshield for Extended Exped.
028146	Creighton Prep HS	\$ 75.00	HAL: Dues, Fees
028147	Datateam Systems/Harris	\$ 150.00	Bus Off: Wkshop
028149	Electronic Sound, Inc.	\$ 908.41	Elem Prin: 30 button phone
028150	Esu #2	\$ 7,599.40	Speech Services
028151	Flinn Scientific Inc	\$ 331.51	HS Science: Lab Supplies
028152	Fremont Industries Inc	\$ 801.58	Maintenance: Glycol
028153	Karen Fricke	\$ 96.06	Oct Activity Worker
028154	GovConnection Inc.	\$ 205.41	Instruction: Supplies
028156	Cali Greve	\$ 19.94	Oct Activity Worker
028157	HARRIS	\$ 297.70	Bus Off: Forms
028158	Heartland Foundation/School	\$ 5,840.00	Student Tuition
028159	HEP Inc.	\$ 19,384.35	Maintenance: Glycol Exchange
028160	Hometown Leasing	\$ 118.00	Admin: Copier Lease
028161	Howard, Lori	\$ 146.19	Sign Language Interpreting
028162	Johnstone Supply	\$ 338.59	Maintenance: Tools
028163	J. W. Pepper & Son, Inc	\$ 356.99	Instr Music: Music
028164	KLAI-CO ID Products	\$ 177.62	Media Laminating Supplies
028165	Monica Laune	\$ 61.63	Oct Activity Worker
028167	Linweld, Inc.	\$ 69.60	Voc Ag: Tank, Gas and Supplies
028168	Zach Lusinski	\$ 52.56	Oct Activity Worker
028169	Mead Lumber Co.	\$ 338.68	Maintenance: Supplies
028170	Midwest Office Automations	\$ 1,317.34	Instruction: Copier Use
028171	MT Library Services DBA Junior Libr.	\$ 837.00	Media: Library Books
028172	NCS Pearson	\$ 78.00	Speech Therapy: Testing
028173	NCSA	\$ 550.00	Elem Principal: Prof Dues
028174	Nebraska Sprinkler/SBrauckmuller	\$ 200.00	Maint: Winterize Irrigation
028175	NECO	\$ 202.50	Elem/DO: Building Security

**Ashland-Greenwood Public Schools
General Fund Claims
November 15, 2010**

Check #	Vendor	Amount	Description
028176	Nebraska Department Of Ed.	\$ 11,594.50	Sped: Student Tuition
028177	ReBecca Neneman	\$ 50.75	Oct Activity Worker
028178	Omaha Paper Co Inc	\$ 261.71	Administration: Newsletter Paper
028179	Omaha Public Power District	\$ 11,405.06	All Areas: Electricity
028180	Nick Pease	\$ 67.06	Oct Activity Worker
028181	Perry, Guthery, Haase & Gessf	\$ 1,517.50	Administration: Legal Services
028182	Debbie Pike	\$ 110.56	Oct Activity Worker
028183	Pitney Bowes Postage By Phone	\$ 500.00	All Areas: Postage
028184	Josh Przybysz	\$ 52.56	Oct Activity Worker
028185	Quill Corp	\$ 266.70	Instruction: Supplies
028187	Zach Reisen	\$ 43.50	Oct. Activity Worker
028188	Reliable Plbg & Htg.	\$ 1,672.23	Maint: Expansion Tank Installation
028189	Hanna Riege	\$ 19.94	Oct Activity Worker
028191	Safety Kleen Systems	\$ 1,286.26	Used Glycol Disposal
028192	Saf-T-Net/Alertnow	\$ 2,213.40	Instruction: Alert Now Renewal
028193	Simplex Grinnell LP	\$ 199.75	Custodial: Sprinkler System
028194	Skyline Physical Therapy, Inc	\$ 454.50	Physical Therapy
028195	Solution One	\$ 699.90	Instruction: Staples-Copier
028196	Southeastern Career Apparel	\$ 380.92	Vocal Music: Uniforms
028197	Sparkling Klean	\$ 5,696.60	Janitorial Services
028198	Strength Tracker-Tom Kotara	\$ 100.00	Workout Software
028199	Teacher's Discovery	\$ 74.35	Media: Elem AV Materials
028201	US Academic Decathlon	\$ 816.97	Instruct: Academic Decath
028202	US Mechanical Service Inc	\$ 2,912.58	Weight Room RTU Repair
028203	U.S. Post Office	\$ 223.78	Bulk Mailing
028204	Voyager Fleet Systems, Inc.	\$ 3,602.68	Transportation: Fuel
028205	Wahoo-Waverly-Ashland Newspaper	\$ 212.54	Board of Ed: Advertising & Printing
028206	Walkers Uniform Rental	\$ 124.00	Uniform Rental
028207	Karen Wiese	\$ 108.75	Oct Activity Worker
028208	Seth Wiese	\$ 10.86	Oct Activity Worker
028209	Beverly Wlggs	\$ 1,930.50	Occupational Therapy
028210	Pat Willard	\$ 14.50	Oct. Activity Worker
028211	W.T.Cox Subscriptions, Inc	\$ 1,191.59	Media: Subscript. Renewals
028213	University Of NE at Kearney	\$ 150.00	Transp: Bus Course Regist.
028214	Ashland Pharmacy	\$ 246.42	Nurse: Supplies
028215	Dietze Music House	\$ 969.73	Vocal Music: Sheet Music
028216	Hewlett-Packard Company	\$ 1,311.40	Instruction: Power Cords
028217	MCI Communications Services, Inc.	\$ 18.35	Long Distance Services
028218	No Frills Supermarkets	\$ 122.72	Voc Ag: Supplies
028219	Nurses Service Organization	\$ 107.25	Nurse: Liability Ins
028220	Omaha Truck Center, Inc.	\$ 68.82	Transp: Parts
028221	Platte Valley Sanitation Inc	\$ 340.00	Waste Removal
028222	Reid's Variety	\$ 12.66	Instruction: Supplies
028223	Omaha Theater Co/The Rose	\$ 279.00	Elem Music: field trip fee
028224	US Mechanical Service Inc	\$ 250.00	Maint: HVAC Repair
028225	VISA	\$ 41.88	Admin: Office Supplies

**Ashland-Greenwood Public Schools
General Fund Claims
November 15, 2010**

Check #	Vendor	Amount	Description
028226	Administrative Operation	\$ 946.37	Mileage Supplies Workshop fees
		\$ 603,433.73	

INCOMPLETES

Payflex			Employee Benefit
Windstream			Local Telephone Service
Ashland Disposal	\$ 205.00		Waste Removal Service
Seminole			Natural Gas
NE DOL Office of Safety	\$ 243.00		Boiler Inspection Certificates

Authorized by:

Education *SPEAK* OR Text Messaging *Lingo*

Directions: Circle those that pertain to education

CIA

SPED

SAT

TTYL
TTYL

504

SLD

IDK

MOT

SAP

ONG

IEP

BFF

IFSP

411

RTI

JK

CIA Curriculum, Instruction, Assessment

SPED Special Education

SAT Student Assistance Team

504 Office of Civil Rights Accommodation Plan

SLD Specific Learning Disability – a SPED verification category

MDT Multi-Disciplinary Team

IEP Individual Education Plan

IFSP Individual and Family Services Plan

RTI Response to Intervention

SIP School Improvement Plan

TTYL Talk to you later

IDK I don't know

OMG Oh my "Gosh"

BFF Best friends forever

411 Information

JK Just kidding

District SPED Staff

Kylie Ebeling – Speech Pathologist (contract with ESU 2)
Jean Bernth – Speech Pathologist
Janet Rolofson – Early Childhood Special Education Teacher
Jody Gude-Rung – Elementary Special Education Teacher
Rita Smits – Elementary Special Education Teacher
Kristin Fangmeyer – Secondary Special Education Teacher (primarily MS)
Brian Bennetzen – Secondary Special Education Teacher (primarily HS)
Jenn Johnson – School Psychologist (share with Wahoo Public Schools)

In addition, AGPS contracts with others to provide additional services such as Physical Therapy and Occupational Therapy.

Process for Identifying students who may need additional academic (or behavioral, emotional, social) assistance – See back

Sample files for students who qualify for Special Education

State of Nebraska Disability Categories

Autism
Behavior Disorder - BD
Deaf-Blindness
Developmental Delay
Hearing Impairment
Mental Handicap
Multiple Impairments
Orthopedic Impairment
Other Health Impairment - OHI
Specific Learning Disability - SLD
Speech-Language Impairment - SLI
Traumatic Brain Injury
Visual Impairment

Special Education Staff Responsibilities

Develop an Individual Education Plan (IEP) for students who qualify for SPED services

 Conduct IEP meetings – collect input from all team members

 Finalize IEP

 At least one IEP meeting per year, per student

 Ensure parents (students) understand the process and the plan

 Ensure compliance with all legal requirements

Monitor Implementation of IEP's on caseload

 Ensure accommodations and modifications are implemented

 Track progress towards IEP goals

 Train and monitor work of SPED paras

 Provide services by supporting classroom teachers and students within the classroom

 Provide direct services to students

Process for referring AGPS students in need of additional academic assistance

IEP Implemented and
Monitored

IEP Developed

AGPS = 111 verified

MDT reviews evaluation
data- if qualifies = IEP; if
does not qualify =
back to SAT

School Psychologist with
teacher input completes
Evaluation

SAT Plan- Not effective=Referral
for evaluation (*may occur*)

SAT Plan Developed, Implemented,
Monitored, Revised (*504 considered*)

AGPS:

Elementary = 24 students

MS/HS = 19 students

CORE + Classroom Teacher
interventions - Not Effective =
SAT Referral

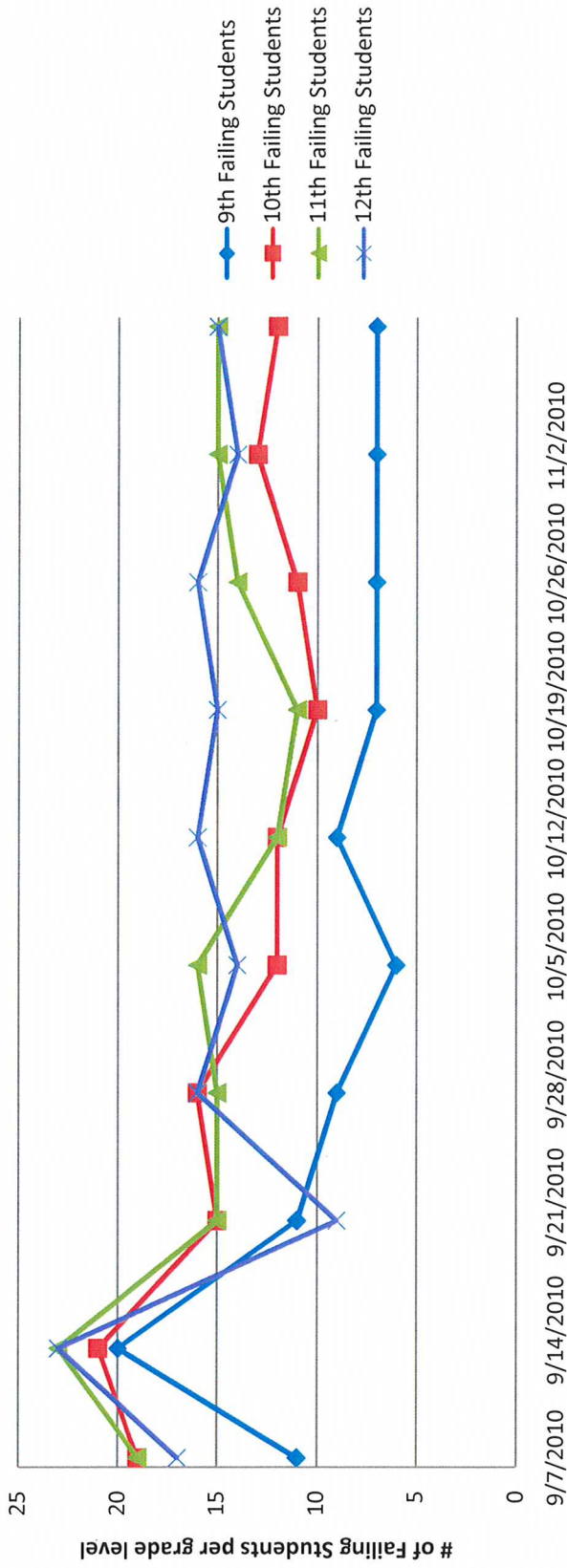
CORE -Not effective =
additional interventions/strategies
by classroom teacher

CORE Program

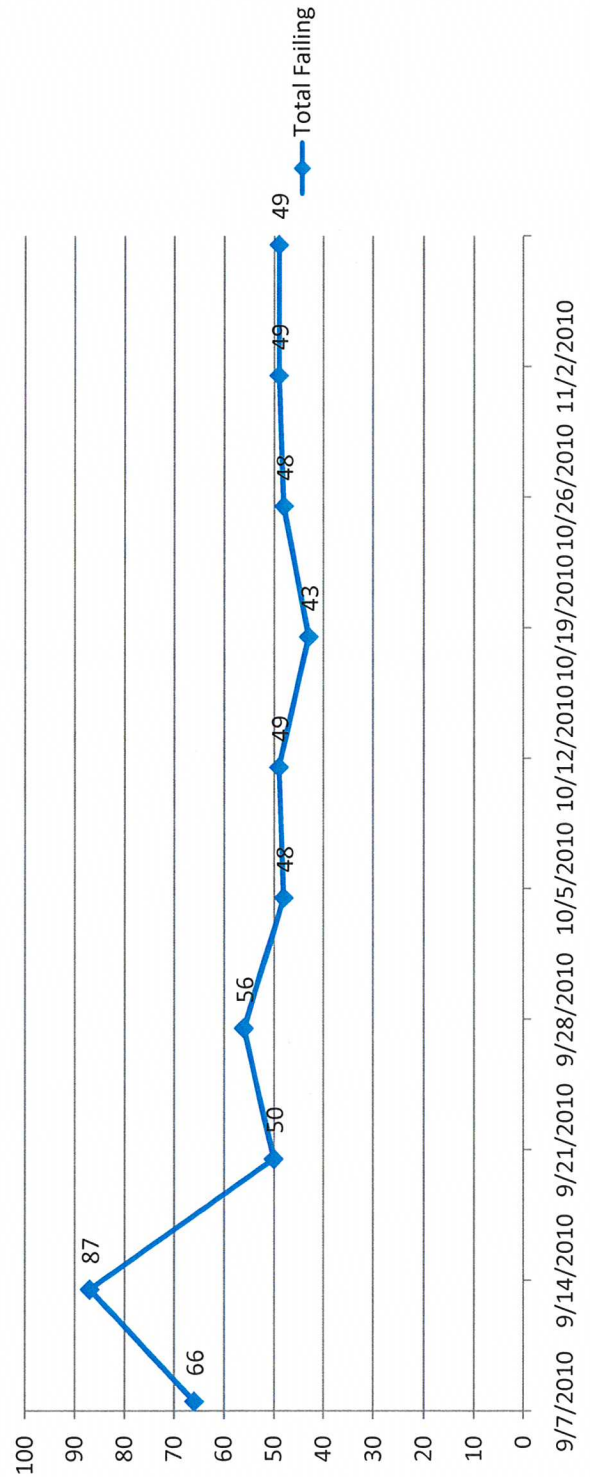
**Curriculum (Standards),
Instruction, and Assessment**

ALL AGPS STUDENTS (872)

AGHS # of Failing Students



Total Failing



Positives:

1. student accountability
2. more adults 'looking after' students
3. improved coach-teacher-student-parent communication

negatives:

1. parents asking coaches 'why not passing' questions (always refer them to the classroom teacher)
2. pressure of the 'end game' if 4th week is playoff/districts/etc time (pressure on coach, student, and teacher)
3. takes TIME to make calls...week 2 call is a must. only other REQUIRED call is if the student is 'benched'...other calls may be necessary at the coach's discretion

improvements/clarifications:

1. Nov. 15 is a 'clean slate' for all students (jon r has some actively involved in MSBB)
2. we are going to attempt to roll into semester 2 w/o another clean slate, but, may take some adjustments.
3. the sequence is failing the SAME class....so, once out of failing for that class, the cycle could start over.

This will be shared with the Board of Education monday night. IF there are any changes recommended, i will share those with you. the attachment is the updated document. Winter Sports coaches: remember that it is an expectation that you have a parent meeting prior to your first game to have the opportunity to explain this procedure.



NCLB CONSOLIDATED APPLICATION - 2010-2011

PURPOSE

1. All students will perform to a high level of achievement.
2. All students will be taught by quality staff.
3. All students will learn in a safe, supportive learning environment.
4. All schools and the Nebraska Department of Education will be learning organizations. This is, involved in a continuous improvement process. Throughout the goals are themes that support student learning and high achievement with an emphasis on coordination and integration, accountability, and equity which include:
 - Professional development
 - Using technology to improve achievement, and
 - Parent/family literacy and involvement

School Improvement Goal: All students will increase reading comprehension across all curriculum areas.

School Improvement Goal: Ashland-Greenwood Public Schools will research and implement strategies to rethink the high school experience.

**Total NCLB Application Budget (includes carryover from previous year) = \$ 134,091.00
(09/10 = \$141,136)**

(Amount includes \$20,800 in ARRA Title I funds. ARRA Title I Funds – a ‘one-time’ amount of \$41,600; we were able to spread this over 2 years. There will be no ARRA Title I Funds in 2011-2012.)

Transferability – District is able to transfer up to 50% of the dollar amount from one program to other programs within the application. In previous years, district has used this option to fund Title II, Part D (Enhancing Education through Technology) and Title IV, Part A (Safe and Drug Free Schools and Communities). No funds were transferred to support these programs in 2010-2011.

PROGRAMS

1. Title I, Part A—Improving the Academic Achievement of the Disadvantaged
 - Funding--\$70,328.00 + \$3,244.00 carryover + \$4,450 reallocated + \$20,800 from ARRA Title I = **98,822.00**
 - Goals:
 - Teacher Salary/Benefits for Title I Staff—Pat Yardley (1.0 FTE)
 - Teacher Salary/Benefits for Title I Staff – Julie Mink (part of .50 FTE)
 - Administrative Salary for Title I Administration – Jill Finkey (part of 1.0 FTE)
 - Reading Recovery training and support

2. Title II, Part A—Teacher Quality

- Funding--\$29,760.00 + \$5,040 carryover = **\$34,800.00**
- Goals:
 - Class – Size Reduction
 - Teacher Salary/Benefits for additional First Grade Teacher (part of 1.0 FTE)
 - Professional development for staff in the areas of:
 - Mentoring for First Year Teachers
 - Curriculum development and articulation
 - Professional Learning Community Groups

3. Title II, Part D—Enhancing Education through Technology

- Funding--\$0 + \$113.00 carryover = **\$113.00**

4. Title III – Limited English Proficiency

- Funding -- **\$311.00** (ESU 3 – Title III Consortium)

5. Title IV, Part A—Safe and Drug-Free Schools and Communities

- Funding--\$0 +\$45.00 carryover = **\$45.00**

Ashland-Greenwood Public Schools - Change Requests

CR#	Description	Building	Cost
1	RFP #1 Footing Changes	Middle/High School	\$660.00 *
2	RFP #2 Add Stoops	Middle/High School	\$443.00 *
3	RFP #3 Add Spread Footing	Middle/High School	\$164.00 *
4	RFP #4 Revise Footing layout & add pad ftg	Middle/High School	\$377.00 *
5	Add Rock Road to BP #01 Contract	Middle/High School	\$2,736.24 *
6	Sanitary Sewer Changes @ Elementary	Elementary	\$65,880.74 *
7	RFP H-5 WELLFIELD CHANGES	Middle/High School	\$55,326.00
7	Wellfield Savings (trench depth & reduced qty)	Middle/High School	(\$25,330.00)
8	Add Door to Conf Rm & Bollard for Fr Door Operator	Middle/High School	\$3,431.00
9	VARIOUS ELECTRICAL CHANGES @ ELEMENTARY	Elementary	Pending
10	RFP E-3 CORRIDOR FLOORINGS	Elementary	\$18,880.00
11	CHANGE CERTAIN WINDOW SILLS TO SOLID SURFACE	Middle/High School	\$983.00
12	RELOCATE MAIN FIRE ALARM PANEL	Middle/High School	\$2,725.00
13	TERRAZZO CHANGES	Middle/High School	(\$1,683.00)
14	UPPER SKYLIGHT DELETE BLOCKING	Elementary	(\$380.00)
15	RELOCATION OF DOOR OPERATOR	Middle/High School	\$82.50
17	REWORK FIRE MAIN AT ELEMENTARY CLASSROOM	Elementary	\$981.00
18	ADD PIER FOR LINTEL SUPPORT	Elementary	\$1,938.00
19	ADD DOOR #401 FOR PUMP SERVICE	Middle/High School	Pending
20	ADD CABINET DOORS IN 214	Middle/High School	\$267.00
21	CHANGE DEPTH OF ELEM CABINETS	Elementary	\$626.00
22	RELOCATE FIBER OPTIC LINE	Middle/High School	\$2,310.37
23	ADD ROOF STRUCTURE (NOT SHOWN) RFI-20	Middle/High School	\$1,404.00
24	CHANGE FEEDERS FOR PANEL "S" RELOCATION	Middle/High School	\$605.00
25	TEST WELL	Middle/High School	\$2,000.00
26	DRYWALL CHANGES @ ELEMENTARY SCHOOL	Elementary	\$6,120.55
27	RFP #H-8 CHANGE HARDWARE @ DOOR 316	Middle/High School	(\$403.00)
28	RFP H-10 CHANGE EIFS ABOVE SOFFITS	Middle/High School	(\$1,511.00)
29	RFP H-11 ELECTRICAL SHUT DOWN OF TILT SKILLET	Elementary	\$277.95
30	RFP H-12 ADD FIRE EXTINGUISHER CABINET	Middle/High School	\$199.00
31	RFP H-13 ADD FIRE SUPPRESSION IN KITCHEN HOOD	Middle/High School	\$1,341.58
32	RFI #21 ADD SUPPORT STEEL @ DUCT/SOFFIT	Middle/High School	\$4,218.00
33	ADD VALVES & PIPING FOR FIELD CONDITIONS	Middle/High School	\$5,077.00
34	CHANGE LOCATION OF FIRE MAIN	Middle/High School	\$8,900.00
35	CHANGE OUT FEEDERS & GROUND FOR PANEL S	Middle/High School	\$6,845.00
36	ADD FIRE DAMPERS @ 2-HR WALLS, HIGH SCHOOL	Middle/High School	\$9,310.00
37	ADD WATER REPELLANTS AT ELEMENTARY PRECAST	Elementary	\$3,685.00
38	DELETE WATER REPELLANT @ HIGH SCHOOL BRICK	Middle/High School	(\$4,750.00)
39	ADD AUTO CONTROL & BACKDRAFT DAMPERS	Middle/High School	No Charge
40	REROUTE PLUMBING LINES AT ELEMENTARY SCHOOL	Elementary	\$3,590.00
41	REROUTE UNDER STAGE FIRE SPRINKLER LINES	Middle/High School	\$783.00
42	MODIFIY HM FRAMES 123 & 125, NEW OPERATOR	Elementary	\$4,916.00
43	MOVED COST FOR CHAIN LINK FENCE TO REIMB.	Middle/High School	\$0.00
44	FLUID APPLIED WEATHER BARRIER @ SOFFITS	Middle/High School	\$1,707.00
45	ADD FIRE DEVICES @ HIGH SCHOOL PER FIRE MARSHALL	Middle/High School	\$2,230.00
46	TIE DOOR HOLDERS INTO FIRE ALARM DOOR 172	Middle/High School	\$836.00
47	NEW POWER OUTLET FOR WATER COOLER	Middle/High School	\$418.00
48	REPLACE WATER COOLER @ HIGH SCHOOL	Middle/High School	\$1,242.00
49	REM WOOD FLOORING & INSTALL CONCRETE-ELEM	Elementary	\$2,585.00
50	REMOVE & REPLACE SLAB ON GRADE @ HIGH SCHOOL	Middle/High School	\$4,316.00

Ashland-Greenwood Public Schools - Change Requests

<u>CR#</u>	<u>Description</u>	<u>Building</u>	<u>Cost</u>
51	R&R ADDITIONAL ELEM PARKING LOT PAVING	Elementary	\$2,680.50
52	UNDERGROUND CONDUIT AT ELEMENTARY	Elementary	\$3,112.45
53	REDUCE OVERHEAD ELECTRICAL CONDUITS	Elementary	(\$1,537.45)
54	VARIOUS ELECTRICAL CHANGES @ ELEMENTARY	Elementary	\$3,224.44
55	CHANGE OUT PANEL 'HT' FRONTS	Middle/High School	\$464.88
56	ADDITIONAL ROCK FOR ELEMENTARY PAVING	Elementary	\$3,599.00
57	ADDITIONAL STEEL COMPONENTS @ HIGH SCHOOL	Middle/High School	\$4,998.00
58	DECORATIVE METAL ITEMS AT ELEMENTARY SCHOOL	Elementary	\$1,638.00
59	FIRESTOPPING OF EXISTING WALL PENETRATIONS	Middle/High School	\$2,475.00
60	MODIFY CABINETS ROOM 214	Middle/High School	\$960.00
61	WATERLINE TO SERVICE GLYCOL TANK	Middle/High School	\$520.00
62	CHANGES TO FLOORING	Elementary	(\$286.00)
63	TEMP CARPETING & PATCHING	Middle/High School	\$1,848.00
64	ADD LIGHT FIXTURE IN CLOSET 133A	Elementary	\$612.08
65	PATCHING GYPSUM	Elementary	\$644.00
66	PATCHING GYPSUM	Middle/High School	\$396.75
67	WALL CHANGES IN KITCHEN/SERVERY	Middle/High School	TBD
68	UNLOADING OF HALLOW METAL FRAMES	Middle/High School	\$166.00
69	METAL STUD WALL IN ROOM 211	Middle/High School	\$580.00
70	CAULK EXISTING HALLOW METAL FRAMES		\$410.00
71	ADD VARIOUS REBAR AND MESH	Middle/High School	\$1,228.12
72	PAVING SEALANT TO URETHANE-ELEM	Elementary	\$496.00
73	GRIND AND FILL ELEMENTARY STAIRS FOR TILE	Elementary	\$1,806.00
74	PAINT/PRIME BLOCKING FOR ALUMINUM FRAME SEALNTS	Middle/High School	\$1,183.00
75	REPLACE CRACKED SKYLIGHT	Elementary	\$3,200.00
76	PAVING SEALANT TO URETHANE-MS/HS	Middle/High School	\$800.00

Total	\$231,578.70
-------	--------------

* Included in GMP

Total under Contingency	\$154,317.72
-------------------------	--------------

Budgeted Contingency

\$308,000.00

Project: L35
 Proj Desc: Huddle Table Quote

Quote: L35.001
 Status: New

Bill To: 3313-00
 Downpayment COD
 Attention: Accounts Payable
 X
 Lincoln, NE 68510

Bill To: 3313-00
 Downpayment COD
 Attention: Accounts Payable
 X
 Lincoln, NE 68510

Ship To: 3313-00
 ASHLAND-GREENWOOD SCHOOLS
 1225 Clay Street
 Ashland, NE 68003
 Attn: Craig Pease

Date Entered	Customer PO	Salesperson	FOB	Terms
11/15/2010		James Schultz	D	CASHBD

Line	Loc	Item Number	MFG	Description	Order Qty	Unit Price	Extended
1	00	MT2460J	HONCO	24"X60" TABLE TOP W/KNIFE EDGE Tag: INCOMPLETE OPTIONS	10	180.01	1,800.10 T
2	00	MBFLIP24L	HONCO	FLIP TOP BASE FOR 24X60 AND 24X72 TOPS Tag: INCOMPLETE OPTIONS Options: .C-CASTERS \$(CORE)-PAINT GRADE: CORE PAINT	10	219.49	2,194.90 T
3	00	MAMODP60	HONCO	MODESTY PANEL FOR 60" LENGTH TABLE TOPS Options: \$(CORE)-PAINT GRADE: CORE PAINT ~UNDECIDED PAINT OPTION	10	77.55	775.50 T
4	00	MAGANG	HONCO	GANGING HARDWARE	10	31.49	314.90 T
5	00	BTMS	HONCO	WIRE MANAGEMENT STRIPS Options: .P-COLOR: BLACK	10	39.48	394.80 T

Sub Total 5,480.20
 Total Tax 356.22
TOTAL AMOUNT - USD 5,836.42

Project Notes:

ORDER TOTAL = \$5480.2

Quote will expire on: December 15, 2011

TERMS AND CONDITIONS

ACCEPTANCE AND INCORPORATION BY REFERENCE. This quotation becomes a contract when accepted by All Makes Office Equipment Co. and is subject to All Makes full terms and conditions available at any All Makes' location and by request.
 DEPOSITS. A 50% deposit is required for special orders from buyers with a commercial credit account in good standing; a 75% deposit is required for projects over \$100,000. A 100% deposit is required for orders from buyers without an account and is due upon acceptance. Remaining balances are due per terms above.
 CANCELLATION AND CHANGES. Merchandise may not be returned without All Makes' authorization. Returned merchandise may be subject to a restocking fee. Changes made after order acceptance may incur additional charges to be paid by the buyer.
 DELIVERY CHARGES. City delivery charges are waived for orders over \$10,000.
 WARRANTY. All new products are guaranteed to be free from defects in material or workmanship for a period of at least twelve (12) months from the date of delivery unless otherwise specified. Defective products will be repaired or replaced with proof of purchase. All used products are sold AS IS with NO WARRANTY and may not be returned.

Sub Total: 5,480.20
 Tax: 356.22
Total: 5,836.42

Signature _____ Title _____ Date _____

2010

JANUARY

S	M	T	W	T	F	S
3	4	5	6	7	8	9
10	11	12	13	14	15	16
17	18	19	20	21	22	23
24	25	26	27	28	29	30
31						

FEBRUARY

S	M	T	W	T	F	S
1	2	3	4	5	6	7
8	9	10	11	12	13	14
15	16	17	18	19	20	21
22	23	24	25	26	27	28
29						

MARCH

S	M	T	W	T	F	S
1	2	3	4	5	6	7
8	9	10	11	12	13	14
15	16	17	18	19	20	21
22	23	24	25	26	27	28
29	30	31				

APRIL

S	M	T	W	T	F	S
1	2	3	4	5	6	7
8	9	10	11	12	13	14
15	16	17	18	19	20	21
22	23	24	25	26	27	28
29	30					

MAY

S	M	T	W	T	F	S
1	2	3	4	5	6	7
8	9	10	11	12	13	14
15	16	17	18	19	20	21
22	23	24	25	26	27	28
29	30	31				

JUNE

S	M	T	W	T	F	S
1	2	3	4	5	6	7
8	9	10	11	12	13	14
15	16	17	18	19	20	21
22	23	24	25	26	27	28
29	30					

JULY

S	M	T	W	T	F	S
1	2	3	4	5	6	7
8	9	10	11	12	13	14
15	16	17	18	19	20	21
22	23	24	25	26	27	28
29	30	31				

AUGUST

S	M	T	W	T	F	S
1	2	3	4	5	6	7
8	9	10	11	12	13	14
15	16	17	18	19	20	21
22	23	24	25	26	27	28
29	30	31				

SEPTEMBER

S	M	T	W	T	F	S
1	2	3	4	5	6	7
8	9	10	11	12	13	14
15	16	17	18	19	20	21
22	23	24	25	26	27	28
29	30					

OCTOBER

S	M	T	W	T	F	S
1	2	3	4	5	6	7
8	9	10	11	12	13	14
15	16	17	18	19	20	21
22	23	24	25	26	27	28
29	30	31				

NOVEMBER

S	M	T	W	T	F	S
1	2	3	4	5	6	7
8	9	10	11	12	13	14
15	16	17	18	19	20	21
22	23	24	25	26	27	28
29	30					

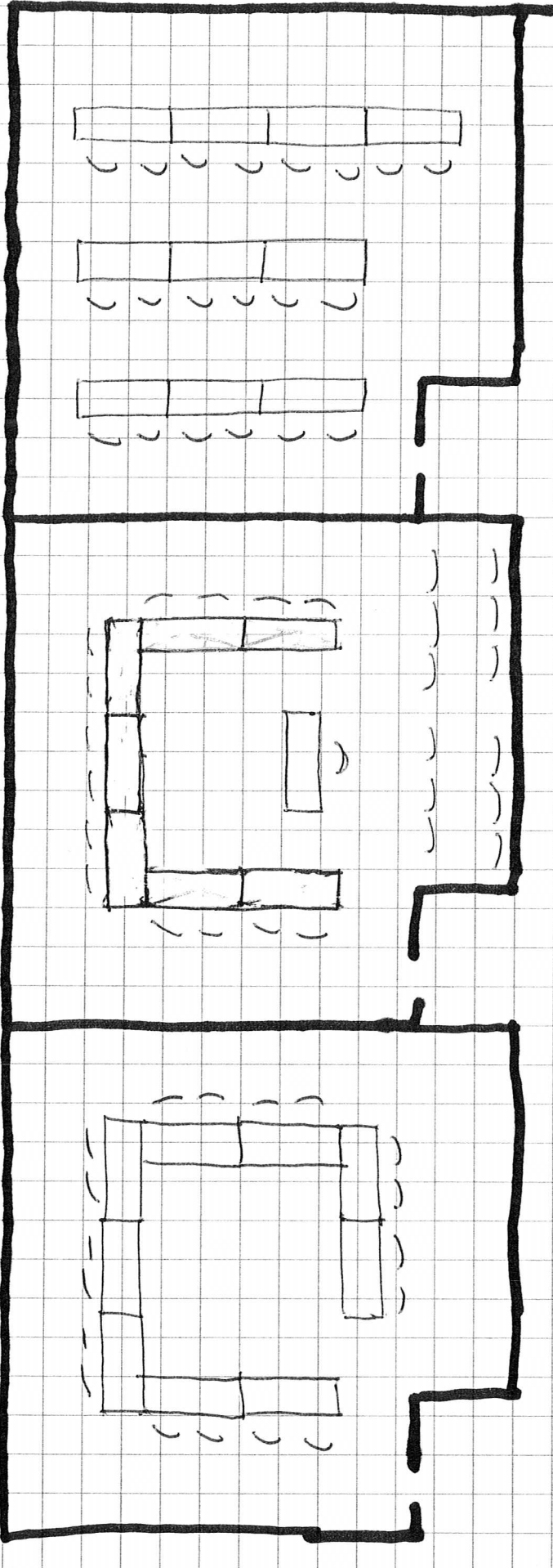
DECEMBER

S	M	T	W	T	F	S
1	2	3	4	5	6	7
8	9	10	11	12	13	14
15	16	17	18	19	20	21
22	23	24	25	26	27	28
29	30	31				

Classroom
Seat 20

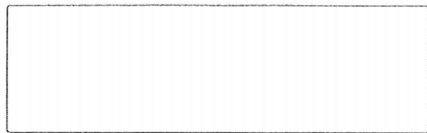
Board
Seat 14
+ Audience

Conference
Seat 18



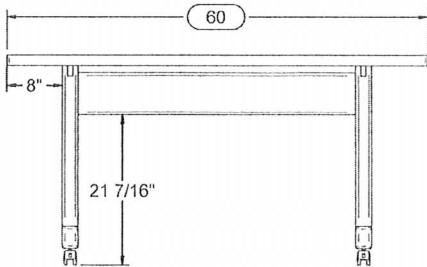
\$ 597⁰⁰

COPY

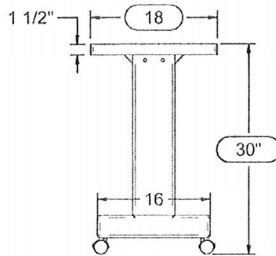


TOP VIEW

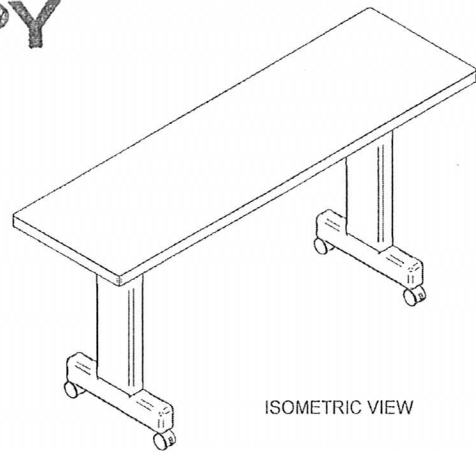
R 3/8
x4



FRONT VIEW



END VIEW



ISOMETRIC VIEW

TABLE TOP:
 1-1/2" PARTICLE BOARD (TOP, LINERS, & SUB TOP) WITH LAMINATE ON TOP ONLY
 OAK HARDWOOD EDGE TRIM WITH SQUARE OVERLAY EDGE PROFILE WITH
 EASED EDGES

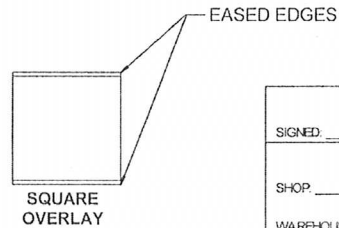
3/8" ROUND ON ALL 4 CORNERS
 TABLE TOP IS REMOVEABLE USING #8x1-1/4" SQUARE DRIVE SCREW

GENERAL CONSTRUCTION:
 OAK HARDWOOD - LEGS, FEET, RAILS, AND STABILIZER (ALL WITH 3/8" RADIUS
 EDGES)

FOUR LOCKING CASTERS

STAIN: _____

LAMINATE: _____



SQUARE
OVERLAY

CUSTOMER APPROVAL		
SIGNED: _____	MANUFACTURING APPROVAL	
SHOP: _____	WAREHOUSE	
Inv # _____	PO _____	Shop _____

ALL INFORMATION PROVIDED HEREIN IS CONSIDERED PROPRIETARY INFORMATION OF CSI. IT MAY NOT BE DISSEMINATED OR REPRODUCED WITHOUT WRITTEN PERMISSION.	DRAWN: tatwood 09/26/07							CSI		
	INITIAL APP: <i>[Signature]</i> 10/15/07							DEQ		
	AS IS							TABLE (SEATING), DEQ W/CASTERS		
	TYPE: OAK	KEYWORDS: EDGE/FACE TRIM/OTHER: SQUARE OVERLAY	HEIGHT: 30	WIDTH: 60	DEPTH: 32	OTHER: -	SHOP DWG	DWG # 08-007	REV ORIG	SHEET 1 OF 3